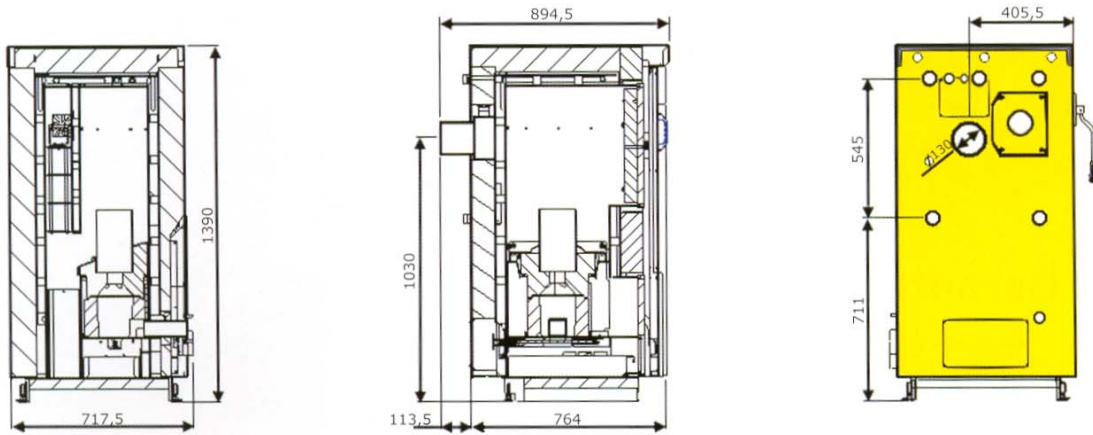


## Technical Data



### TYPE

Nominal Capacity

Capacity Range

Fuel

Device Control

Measures (hxbxt)

Boiler Weight

Efficiency Rate

Chimney: Smoke Tube Connection Ø  
Flue Gas Temperature  
Min. Draft Requirement

Boiler Water Volume

Combustion

Permanent Operation, Grate Cleaning

Ignition

Ash box

Adjoining Pellet Hopper

Burning Duration of 1 Hopper Charge

Automatic Hopper Refilling

Reverse Flow Mixing Valve (RFMV)

Safety Functions

Accessories

### PN 15

14,9 kW

4,5 – 16,0 kW

Wood Pellets according to ÖNORM M 7135 and DINplus

thermocontrol; micro-processed boiler and conveyor control unit; including exterior temperature control, heat distribution control for 2 separated heating circles (mixing valves), hot water and buffer tank control ...

1390 x 695 x 985 mm (mounting measure 730 mm)

400 kg

up to 93 %

130 mm  
150-165 °C  
0,05-0,25 mbar

about 65 l

Insertion grate-combustion, high quality fireclay

Patented, automatic deslagging and de-ashing by means of stainless steel tilting grate

Automatically by means of a glow-ignition (about 270 W)

15 l and 6 l (ash removal when necessary, depending also on fuel quality, about 2 times a quarter year)

about 200 l (130 kg) or about 120 l (78 kg)

Depending on heat output, max. 120 hours (200 l)

Yes, flexible pellet supply with **VARIO** (screw conveyor) or **visionconvey AIR** (suction conveyor)

External RFMV mandatory (minimum reverse flow temperature 55°C)

MFS 7+ (STL, air-lock, discharge chute, insertion sensor, residual embers utilisation, laminate, etc.)

Automatic fuel supply, room device/remote control, mixing valve, etc.

### PN 23

23,0 kW

6,0 – 23,0 kW

### PN 30

30,0 kW

9,0 – 31,0 kW